

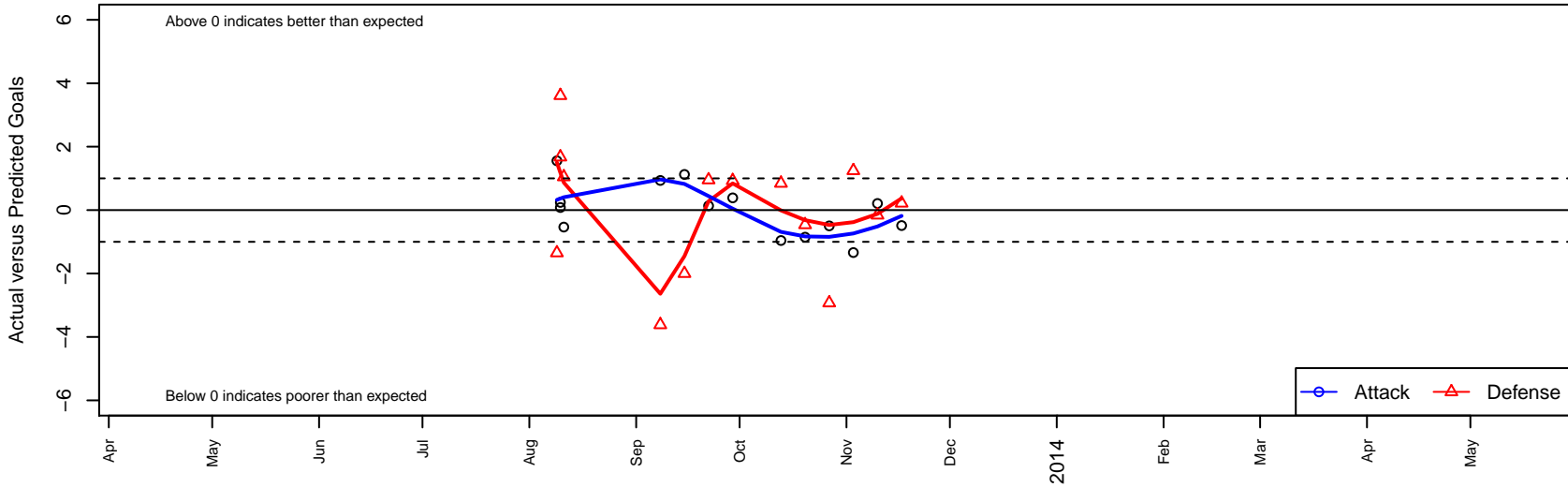
Norpoint Black B95

Norpoint SC
 Tacoma, WA
 B95 total strength=1545
 attack=16.75 defense=10.47
 fall league = RCL B95 Div 3
 notes= Atwood 2012
 alt names used:
 Norpoint FC '95/Black
 Norpoint FC 95 Atwood
 NORPOINT FC'95 (WA)
 Norpoint FC 95
 80-Norpoint FC '95
 Norpoint B95

Venues played:
 Mt Hood Challenge BU17 HS Premier-Gold
 RCL B95 Div 3



Norpoint Black B95
 Dots are actual minus expected GF (blue circles) and GA (red triangles).
 Blue line is smoothed change in attack strength. Red is smoothed change in defense strength.



	date	home		away		venue	pred.home	pred.away
18989	2013-11-17	Norpoint Black B95	1	Washington Timbers Forrest B95	2	RCL B95 Div 3	1.49	2.22
18290	2013-11-10	Pacific FC Fire Blue B95	3	Norpoint Black B95	1	RCL B95 Div 3	2.84	0.79
17513	2013-11-03	Norpoint Black B95	0	Lake Hills Velocity B95	1	RCL B95 Div 3	1.34	2.24
16489	2013-10-27	Norpoint Black B95	0	Crossfire Select Jinneman B95	6	RCL B95 Div 3	0.50	3.07
15618	2013-10-20	Crossfire Premier 2nd B95	4	Norpoint Black B95	0	RCL B95 Div 3	3.54	0.85
14671	2013-10-13	PacNW Blue B95	1	Norpoint Black B95	1	RCL B95 Div 3	1.84	1.96
12569	2013-09-29	Blackhills FC Black B95	1	Norpoint Black B95	2	RCL B95 Div 3	1.93	1.61
11688	2013-09-22	Norpoint Black B95	2	NWN Blue B95	1	RCL B95 Div 3	1.86	1.95
10709	2013-09-15	Slammers Orange B95	5	Norpoint Black B95	2	RCL B95 Div 3	3.00	0.88
9731	2013-09-08	Seattle United Samba B95	5	Norpoint Black B95	2	RCL B95 Div 3	1.38	1.06
6596	2013-08-11	Norpoint Black B95	0	Utah Impack Black B96	1	Mt Hood Challenge BU17 HS Premier-Gold	0.54	2.05
6369	2013-08-10	WAFC Arsenal B95	0	Norpoint Black B95	1	Mt Hood Challenge BU17 HS Premier-Gold	3.61	0.92
6382	2013-08-10	Norpoint Black B95	2	Wisoville Wildcats B94	1	Mt Hood Challenge BU17 HS Premier-Gold	1.76	2.67
6033	2013-08-09	Eastside Timbers Black Barcelona B96	6	Norpoint Black B95	2	Mt Hood Challenge BU17 HS Premier-Gold	4.65	0.44